

2023



GOLF **CLASSIC** **JOURNAL**

CELEBRATING 55 YEARS

**of Building Girls of Courage, Confidence,
& Character Who Make The World a Better Place**

19 SEPTEMBER
2023

NISSEQUOGUE
GOLF CLUB
Saint James, NY

About Girl Scouts of Suffolk County

At Girl Scouts of Suffolk County, our mission is to build girls of courage, confidence, and character who make the world a better place.

The Girl Scout Leadership Experience is centered on four pillars-STEM, Outdoors, Life Skills, and Entrepreneurship, and is designed to build confidence in every girl, regardless of background or ability. Guided by supportive adults and peers, girls develop their leadership potential through age-appropriate activities that enable them to discover the world around them.

Today's Girl Scouts are tomorrow's world changers, and at Girl Scouts of Suffolk County, we are committed to helping every girl build a foundation for success.



Change the world, invest in Girl Scouts

When Girl Scouts are in charge, you can be sure they will change the world for the better. Support Girl Scouts of Suffolk County and be a part of that change by investing in our council initiatives or joining us at an upcoming fundraising event.

Visit www.gssc.us/donate or scan our QR code



Letter To Supporters

Dear Friends,

At Girl Scouts of Suffolk County, we're celebrating 55 years of building girls of courage, confidence, and character who make the world a better place, and we know that milestone would not be possible without supporters like you.

Our programming centered on four pillars, STEM, Outdoors, Life Skills, and Entrepreneurship, provides unique experiences to help level the playing field in our ever-changing world. Your generosity ensures that every girl has a safe space to unlock her potential and be anything, regardless of background or ability.

Our 2023 Golf Classic Honorees, Christopher Coluccio, CEO and Co-founder of Techworks Consulting, Inc., and Dr. Venise Mule-Glass, CEO of Sunshine Physical Therapy, share our vision for the future of girls. Today's Girl Scouts are tomorrow's world changers. We are delighted to honor Christopher and Venise, whose dedication to our mission uplifts our girls as the next generation of leaders.

Warmly,

Tammy Severino
President & CEO



Donna Smeland
Chair of the Board



Corporate Camp-For-A-Day

Team Building with the Power of Girl Scouts

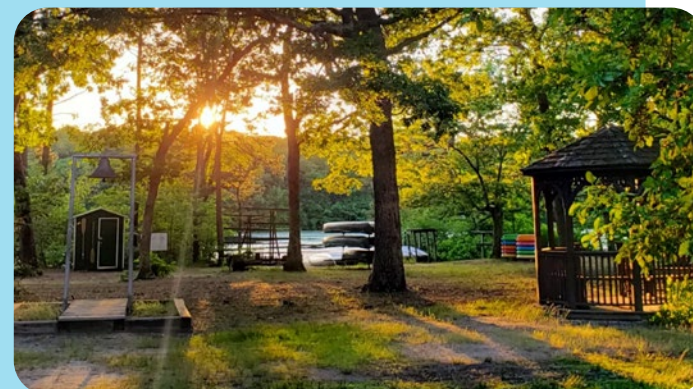
We will host your team (*up to 10 people*) as they take on the role of adult campers for the day and participate in group-focused recreational activities such as hiking, fishing, archery, and camaraderie!

- **Date:** Thursday, October 5
- **Time:** 10:00 AM - 3:00 PM
- **Location:** Camp Edey, Bayport
- **Register by September 22**

We will impart the Girl Scout Experience to your team members while gathering for a great cause. Lunch will be served as the groups engage on this day with other corporate teams and GSSC partners.

In the spirit of community service, we are collaborating with **Habitat for Humanity** to support families moving into newly built homes. We ask attendees to bring a household item to be donated to a Habitat for Humanity Long Island family. [See wishlist online here.](#)

Your \$2,500 investment for this day will directly support our Girl Scout programming and scholarships which help make it possible for girls in need to attend our Summer Camp.



For more info & to register, please contact Nyrekia White, Director of Advancement & Strategic Partnerships at (631) 543-6622, ext. 245, nwhite@gssc.us

girl scouts
of suffolk county

Our Golf Committee

Jeffrey Weiner
HKM Associates
Golf Chair

Lauren Agunzo
Nawrocki Smith LLP
GSSC Board Member &
Fund Development Committee

Ed Becker
Outsource Your Books, LLC

Jeff Berkman
Falcon Rappaport Berkman

Mike Donnaramma
M2 Media Group

Jonathan Fuller
Techworks Consulting, Inc.

Thomas Lohr
Techworks Consulting, Inc.

Maria Marino
Sir Speedy
GSSC Board Member &
Fund Development Committee

Alan Schwartz
Law Offices of Alan J. Schwartz, P.C.

Karen Sweeney
Bethpage Federal Credit Union
GSSC Board Member &
Fund Development Committee

Michael Reynolds
Meyer, Suozzi, English & Klein, P.C.

John Udaze
Behavior Solutions Inc.
GSSC Board Member &
Fund Development Committee

Justin Volence
Rockline Wealth Management

Robert Wilke
Trophy Nut Company

Ricky Wolbrom
Malc, Wolbrom & Associates

Nyrekia White
Director Advancement & Strategic Partnerships of GSSC

Tammy Severino
President & CEO of GSSC

Our Honoree: Chris Coluccio

CEO & Co-founder of Techworks Consulting, Inc.

Since he can remember, Chris Coluccio's love of technology was practically hard-wired. At the young age of 8, Chris was already known by his 3rd grade classroom as the resident gadget wizard. Around the same age, he coded his first program—and as technology advanced, his love for it only expanded. During his college years, Chris worked on projects such as the “Big Dig” in Boston on co-op, and large construction projects in Manhattan. Everywhere he went, Chris seemed to be known as the resident “I.T. Guy”—fixing computers and other devices, even back when email was still a foreign concept. Eventually, having realized I.T. was his true calling, he spent his final undergrad years at Dowling College, majoring in Computer Science, and continued-on to become the I.T. Administrator for one of the largest print manufacturers on Long Island. This would serve as a major steppingstone for his career in I.T.



In 2002, Chris would form Techworks Consulting, Inc., with the intention of bringing technology services to companies so they could realize their fullest potential. He believed in taking a holistic approach—providing long-term solutions rather than short-term fixes—and carries that mentality into his role as a leader to this day. In 2017, Chris further evolved the company when, after much research, he implemented the Entrepreneurial Operating System (EOS), leading to the adoption of our Core Values, and providing a new and improved way of running the company.

Chris continues to be widely recognized for his vigorous advocacy of technological innovations, high standards for quality support & services, and cybersecurity awareness. He has been a pillar in the community and is an excellent resource for individuals and companies alike. In addition to his role in Tech, Chris is the Vice President of the MacArthur Business Alliance, and the President of the Christopher A. Coluccio Foundation in memory of his son. While his career has spanned decades, he considers his most important role to be the one he plays as a husband and father.

Having built his way up from the back of a print shop to a 35-person staff housed in over 8,000 square feet—Chris is truly the embodiment of the American Dream!



Our Honoree: Dr. Venise Mule-Glass

PT, DPT, OCS, CSCS, RYT, Owner of Sunshine Physical Therapy

Dr. Venise Mule-Glass, DPT is a Physical Therapist in Commack, NY, and has over 45 years of experience in the healthcare field. She graduated from Stony Brook University in 1978. She is affiliated with Hospital for Special Surgery. As the Owner of Sunshine Physical Therapy (established in 1981) Dr. Mule-Glass has also spent time as Clinical Instructor for the Physical Therapy Program at Stonybrook, Ithaca, and Touro Colleges and also has been a frequent lecturer on yoga, anatomy, preventing yoga, and sports injuries and orthopedic rehabilitation.



Venise started volunteering her time and resources with the first athletic trainer, at Commack high school in the late 1980s before the district had the funds to hire its own. Dr. Mule-Glass has served and, in some cases, continues to serve on the Wellness Committee, the school-to-business partnership committee, and the Coalition for Caring among other committees. She has volunteered at career days for Commack Middle School and Commack High School as well as during career/college nights. Venise enjoys serving as a guest speaker for the future business leaders' class, the health professions club, and the exercise physiology and sports medicine classes. Venise is also a certified yoga instructor who loves what she does, as a Physical Therapist, business owner, and mom of 2 wonderful children, Kristen, and Ryan.

“I continue to be passionate about what I do, demonstrate what I do, and inspire others to be the best I they can be, no matter what their future profession. I also want to thank my wonderful family, staff, and patients for allowing me to juggle my time to continue to serve the community.”





Girl Scout Community Programs

Last year, we brought the Girl Scout Experience to over 1,800 girls across diverse communities in over 21 schools and 4 family shelters.



We want the Girl Scout experience for all girls. Because all girls, despite background or ability, deserve educational and enriching opportunities that help them discover their strengths and passions.

*Compared to non-Girl Scouts, Girl Scouts are more likely to...

- **Develop a Strong Sense of Self:** *They have confidence in themselves and their abilities, and are happy with who they are as a person.*
- **Display Postive Values:** *They act ethically, honestly, and responsibly, and show concern for others.*
- **Seek Challenges:** *They take appropriate risks, try things even if they might fail, and learn from mistakes.*
- **Form Healthy Relationships:** *They develop and maintain healthy relationships by communicating their feelings directly and resolving conflicts constructively.*
- **Be Community Problem-Solvers:** *They desire to contribute to the world in purposeful and meaningful ways, learn how to identify problems in the community, and create "action plans" to solve them.*

*The Girl Scout Impact Study, GSRI, 2017

Making a Difference

With close to 30 schools for this upcoming year and up to 90% of these Girl Scouts in need of scholarships, it's more important then ever to ensure we can give them access and help them become the next generation of leaders.

Join our team of strategic partners who enhance our Community Programs by adding other special workshops on financial literacy and budgeting, STEM activities, and special guest speakers.



For more information, contact customercare@gssc.us or call (631) 543-6622

GSSC's Holiday Light Show at the *Enchanted Forest*



Walk along a 1/2 mile trail filled with magical lights and holiday displays this year! Buy our Early Bird Tickets starting October 1: \$12 per person (\$15 per person starting November 2)

Show opens Thursdays - Sunday starting November 25. (Closed 12/24 & 12/25)

Learn more at www.gssclightshow.org

Sponsorships and Group Sales available—
Help spread the Holiday Cheer this season!

For more info, Contact Nyrekia White, Director of Advancement & Strategic Partnership,
at nwhite@gssc.us or (631) 543-6622 x245

girl scouts
of suffolk county

Girl Scouts of Suffolk County's MAKING AN IMPACT BREAKFAST



Friday, March 8, 2024
International Women's Day

Stonebridge Country Club
2000 Raynors Way, Smithtown, NY 11787

Resilient Ready Strong:
Empowering the Next Generation of Leaders

Celebrate this International Women's Day, March 8th, 2024 with an inspirational panel featuring dynamic women as they share their stories on empowerment, leadership skills, and the importance of mental health for today's Girl Scouts.

Sponsorships including exhibitor tables & networking opportunities are available.

Join The Discussion!

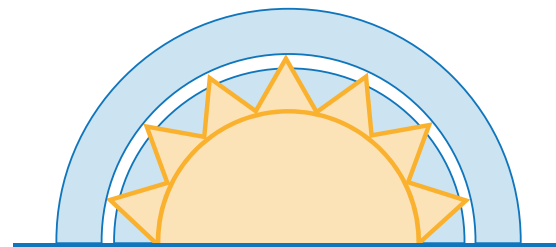
Contact Nyrekia White, Director of Advancement & Strategic Partnership, for more information: nwhite@gssc.us or (631) 543-6622 x245

girl scouts
of suffolk county

442 Moreland Road
Commack NY 11725
www.gssc.us

Our Golf Sponsors & Supporters

55th Anniversary Grand Sponsors



Sunshine Physical Therapy

297 Commack Road, Commack, New York 11725



Awards Dinner Sponsor



Grand Cocktail Reception Sponsor



Our Golf Sponsors & Supporters

Breakfast Sponsor



Entertainment Sponsor

**Golden Family &
Steve Greco Design**

Dessert Sponsor

Charlene Precker Liblit

Our Golf Sponsors & Supporters

Our Golf Sponsors & Supporters

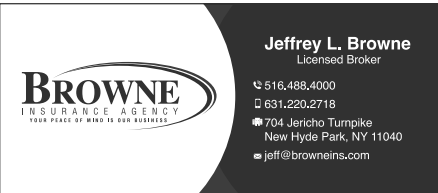
Driving Range Sponsor

Favors & Swag Sponsor

Tee Sign Sponsors



The Bateman Family



Photography Sponsor

Golf Cart Sponors

The Garbarino Family



Matt Keltos & Steve Davis

Eric & Shelly Kramer



Our Golf Sponsors & Supporters

Tee Sign Sponsors

**The LoGiudice
Family**



**Mike & Kathie
Nawrocki**



Our Golf Sponsors & Supporters

Supporters

American Restoration Solutions
BBS Architects
Commack Basketball Association
John & Dolores Corrado
Deutscher & Daughter
Emerald Document Imaging
Falcon Rappaport & Berkman LLP
Family Residence and Essential
Enterprises Inc.
Felberbaum, Halbridge, & Wirth
Fuller, Lowenberg & Co.
Anthony & Kim Gentile
Andrew Gregory
Tom Hair
Bobby Joyce
HKM Associates, Inc.
Rich Haas
Jeremy J. Scileppi, PLLC
JM2 Architecture PC

MAC Abstract
Malc, Wolbrom & Associates
Outsource Your Books LLC
Frank Napoli
Peters Fruit Co.
Principal® Financial Network
of New York Metro
PSP Turnkey Solutions
R&D Tax Savers
Andrew Reda
ServPro
Donna Smeland
Suffolk Credit Union
Jack Sweeny
Taroff & Taitz LLP
Trophy Nut Co.
Vedge Nutrition
Xhordi Xhokola
Thomas Zeng

Our Raffle Donors

- Adventureland*
Alex M. Wolff Photography
Angie's Creations
Arooga's Grille House and Sports Bar
Audi of Smithtown
Avocados Mexican American Grill
Barkbox
Bethpage Federal Credit Union
Bethpage State Park Golf Course
Brandy Scott
Chiddy's
Cinema Arts Center
Clovis Point Vineyard & Winery
CM Performing Arts Center
Dan Schaefer
Del Fuego Restaurant
Dick's Sporting Goods / Golf Galaxy - Bayshore
Diva Nail & Spa
Donna Smeland
Dr. Venise Mule-Glass/Sunshine Physical Therapy
Ed Becker
Engineers Country Club
Ernie Smith
Falcon, Rappaport, & Berkman LLP
- Fran Greene, LCSWR*
Frank Napoli
Gyrolicious
Hilltop Kitchen and Bar
J&R's Steak House
Jeff Weiner/HKM Associates
John W. Engeman Theater
Jonathan Fuller/Techworks Consulting, Inc.
Jones Golf Academy
La Villetta II Resturant
Liberty Coca-Cola
Long Island Nets
Madison Theater at Molloy University
Maria Marino
Matt Engel of Langsam Properties
Michele Dry Cleaners
New York Giants
New York Islanders
New York Mets
New York Red Bulls
Old Westbury Gardens
On the Mend
Piccolo Restaurant of Huntington
Playa Blanca Hotel & Resort, Panama
- Revel Restaurant & Bar*
Ring LLC
Rose Hill Vineyards
SimPlay Indoor Golf
Steven and Jessica Smith
Sweet Hollow Diner
Tammy Severino
Taste of Asia
The Adventure Park at Long Island
The Capital Grille
The Country Fair - Medford
The Hamlet Golf & Country Club
The Haven (Sylvan Beach, NY)
The Mandeville Method
The Round Table Networking Group
The Village Club at Sands Point
The Wellness Company
Thomas Lohr/Techworks Consulting, Inc.
Ticket Bash
Tom James Company
Topgolf - Holtsville
Urban Air
Vincent's Clam Bar
WineUDesign

Give the power of Girl Scouts and help inspire the next generation of leaders.



\$250.00
could sponsor a girl's membership, uniform, and program participation for 1 year.

Donate Today at gssc.kindful.com



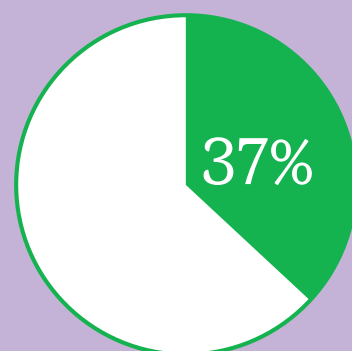


Girl Scout Alum Facts*

The Girl Scout alum community is over 50 million strong.

Based on current U.S. government population estimates, there are approximately 143 million adult women in the United States.

More than 1 in 3 women in the United States were Girl Scouts at some point in their lives.



79%
say they stand up for their beliefs and values

Compared to other women, Girl Scout alums embody higher levels of:

- **Courage**—they show resilience when learning from failure and setbacks, take on challenges, are ambitious, and aren't afraid to take risks (46% compared to 36%).
- **Confidence**—they accomplish what they set out to do and are assured in their abilities (66% compared to 53%).
- **Character**—they lead purposeful and meaningful lives, are honest and trustworthy, stand up for their beliefs and values, and actively contribute to others' well-being (74% compared to 62% showed positive values and 61% compared to 48% showed positive self-image).

*Girl Scout Alum Facts, GSRI, 2021

Thank You to Our Golf Classic Honorees For Supporting Girl Scouts!



Christopher Coluccio
CEO & Co-founder of
Techworks Consulting, Inc.



Dr. Venise Mule-Glass
PT, DPT, OCS, CSCS, RYT
Owner of Sunshine Physical
Therapy

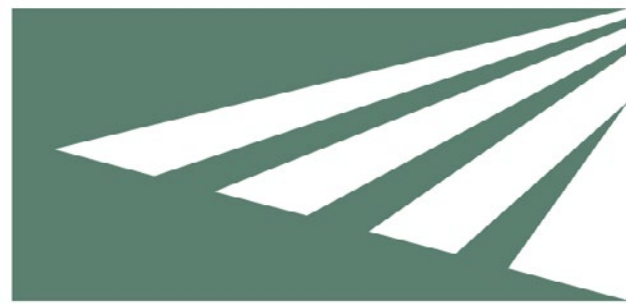


girl scouts 
of suffolk county

Join, Volunteer, Reconnect or Donate at www.gssc.us

We Proudly Salute The Girl Scouts of Suffolk County

On Their 2023 Golf Classic Honorees
Christopher Coluccio & Dr. Venise Mule-Glass



Nawrocki Smith LLP
CERTIFIED PUBLIC
ACCOUNTANTS
&
BUSINESS CONSULTANTS

100 Motor Parkway
Suite 580
Hauppauge, NY 11788
Telephone: 631-756-9500
Facsimile: 631-756-9818
Website: www.nsllpcpa.com

THANK YOU!

to our Golf Classic Honorees,
Chris Coluccio & Dr. Venise Mule-Glass,
and to all of our sponsors and attendees
for your continued support of
Girl Scouts of Suffolk County!



Donna Smeland
Chair of the Board





Sunshine Physical Therapy

297 Commack Road
Commack, NY 11725

**ENJOY THE THINGS
YOU LOVE TO DO**

Call to Schedule an Appointment

631-499-1038

Sunshine PT is a
Proud Supporter of



**Girl Scouts of
Suffolk County**



Dr. Venise Mule – Glass, DPT
Venise Mule-Glass,
PT, DPT, OCS, CSCS, RYT
HSS Credentialed Advanced Hip Clinician
Pilates Certified, Yoga Therapist, C-IAYT
Chairperson Council of Licensed
Physiotherapists of NYS.

**Most Insurances
Accepted**
**NO PRESCRIPTIONS
REQUIRED**
(some insurances exempted)



What Differentiates **SUNSHINE PHYSICAL THERAPY** from other Physical Therapy Offices? We asked our patients and they said... "Experience, HHS Hospital of Special Surgery Credentials, Longevity of Providing Professional Service and Care to our Community."

With every Visit at **SUNSHINE PHYSICAL THERAPY** a Hands on approach is provided with specialized treatment to the specific needs of our patients. While many practices have a PT evaluate their patients initially and then most subsequent visits are often with inexperienced staff.

Just in 2021 thus far **SUNSHINE PHYSICAL THERAPY** has rehabilitated over 200 patients that had received HIP, KNEE, SHOULDER Replacement and ROTATOR CUFF Injuries.

- ✓ Orthopedic Clinical Specialist
- ✓ Sports Rehab Therapy
- ✓ Post Operative Therapy



HSS Certified
Orthopedic
Hip Specialist

I've gone to other PT's for months and was not getting better. I came to Sunshine Physical Therapy and started having decreased pain within a few treatment sessions.

I continue to be impressed with everything here. The Staff is EXTRAORDINARY! Warm, Caring, Professional, Concerned ...

Practice is Top Notch #1



**SCAN BETTER PT
for an appointment**

SP522A



TECHWORKS
CONSULTING INC.

congratulates this years honorees!



Christopher Coluccio

CEO & Co-Founder
Techworks Consulting, Inc.



Dr. Venise Mule-Glass

PT, DPT, OCS, CSCS, RYT, Owner
Sunshine Physical Therapy



PROUD TECHNOLOGY PROVIDER OF

girl scouts
of suffolk county

For over 20 years, Techworks Consulting, Inc. has been helping non-profits like the Girl Scouts of Suffolk County power their mission for dedicated IT Support.



TAKE THE NEXT STEP

Learn more about how Techworks can help your business please visit:



Call Us.
631.285.1527



Email Us.
info@maketechwork.com



Visit Us.
www.maketechwork.com





Your support can give girls the power of
INNOVATION

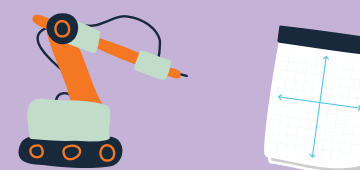
Donate Today at gssc.kindful.com



What do
Girl Scouts think
about the STEM program?*

Two-thirds of Girl Scouts (67%)
are doing STEM programs—and the
majority are doing multiple activities.

95%
of girls who
did Girl Scout
STEM activities
thought they
were fun



 **91%** 
tried activities they
have never done before

88% want to do
more STEM
activities



"I liked Backyard Science Night with the telescopes because seeing the moon through the telescope was cool." (Daisy)

"Observing the chemical reactions in candy making was very hands-on and left me with a good taste in my mouth." (Ambassador)

*The Impact of Girl Scout STEM Programming, GSRI, 2022

Bethpage is proud to support the
**Girl Scouts of Suffolk
 County's 2023
 Golf Classic**

Congratulations to this year's honorees:

*Christopher Coluccio, CEO & Co-Founder of Techworks Consulting, Inc.,
 & Dr. Venise Mule-Glass,
 Owner of Sunshine Physical Therapy!*



For more information, visit lovebethpage.com.

Bethpage
 Federal Credit Union



Family Residences and Essential Enterprises, Inc. (FREE)
is proud to support Girl Scouts of Suffolk County and
Congratulates them on their 55th Anniversary!



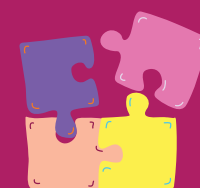
Family Residences and Essential Enterprises, Inc. (FREE), founded in 1977, benefits and proudly supports more than 4,000 individuals with intellectual / developmental disabilities, mental illness and traumatic brain injury. It is the mission of FREE to support people of all abilities reach their full potential and thrive in their communities. FREE provides a diverse array of supports and services including: housing; recovery services; transition to work; employment; day, community and family services; respite; crisis services; education and after school support; specialty health services; and advocacy.

Join Our Team! Apply Online at www.FamilyRes.org



Your support can give girls the power of
SELF-CONFIDENCE

Donate Today at gssc.kindful.com



How Girl Scouts Can Support Mental Health*



*"Because of Girl Scouts, I've had a community
and a safe place to be myself."*

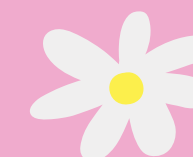
2/3rds
of girls feel
like being in
Girl Scouts
supports their
mental health.



Girls say Girl Scouts
provides...



- ✓ A safe space
- ✓ A program that teaches leadership, courage, confidence, & character
- ✓ Social support & friendships
- ✓ Supportive adult relationships
- ✓ Consistency & comfort in a time of change



"Girl Scouts has taught me to be self-confident, which is very good for my mental health. I have learned to be brave when trying new things, which reduces anxiety I might have had when put in new or uncomfortable situations. I have learned to be adaptable. Girl Scouts' encouragement of always trying new things has led me to pursue activities that make me happy."

*Girl Speak Out About Mental Health, GSRI, 2020

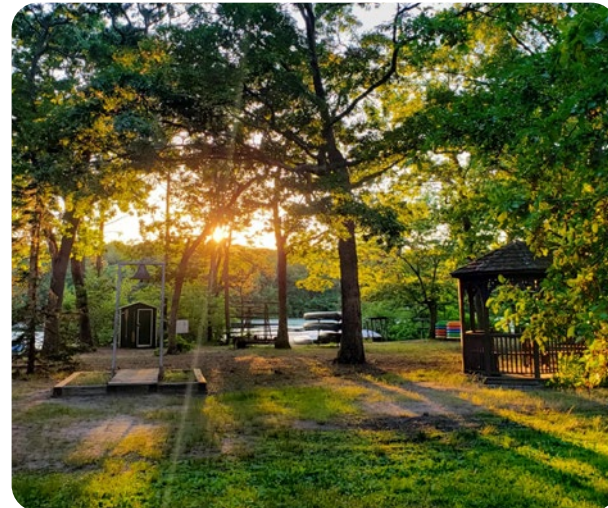
Book Your Next Event or Retreat with Girl Scouts of Suffolk County!

Your Next Adventure Awaits You & Your Team at Camp Edey! This picturesque location is the perfect backdrop for your next event or staff retreat. Situated on a sprawling 95-acre property, Camp Edey boasts beautiful views of the Sans Souci Lakes in Bayport.

Whether you're a Girl Scout or a non-Girl Scout group, we've got you covered! Camp Edey offers a variety of indoor and outdoor activities that are sure to get you into the team spirit. From boating and fishing to archery and more, there's something for everyone.

Don't miss out on the fun! Book your next event at Camp Edey and create memories that will last a lifetime! Fill out our Request Space Inquiry Form at <http://bit.ly/space-inquiry-form>

Please note, our camp is unavailable during our summer camp season, June 1 through mid-August.



Questions? Contact Nyrekia White, Director of Advancement & Strategic Partnership, at nwhite@gssc.us or (631) 543-6622 x245

girl scouts 
of suffolk county

SILVER

CONGRATULATIONS TO THE HONOREES



Dr. Venise Mulé-Smith, PT, DPT, OCS, CSCS,
RYT & CEO of Sunshine Physical Therapy



Christopher Colucchio, CEO & Founder
of Techworks Consulting, Inc.

OF THE GIRL SCOUTS OF SUFFOLK COUNTY 2023 GOLF CLASSIC



THANK YOU FOR YOUR DEDICATION!

from all of us at



**LAMB &
BARNOSKY, LLP**

ATTORNEYS AT LAW
TRUST. PERSONAL ATTENTION. RESULTS.

534 Broadhollow Road - Suite 210
Melville, New York 11747
Phone: (631) 694-2300

WWW.LAMBBARNOSKY.COM

Lamb & Barnosky, LLP©
Attorney Advertising: Prior Results Do Not Guarantee A Similar Outcome.



To Dr. Venise Mule-Glass
CONGRATULATIONS!

From Charlene Precker Liblit

Steve Greco Design Congratulates Today's Honorees!

Also, a special thanks to Loretta Golden and the entire MarCom team at GSSC for what a great job they all do to promote and support such a vital organization.

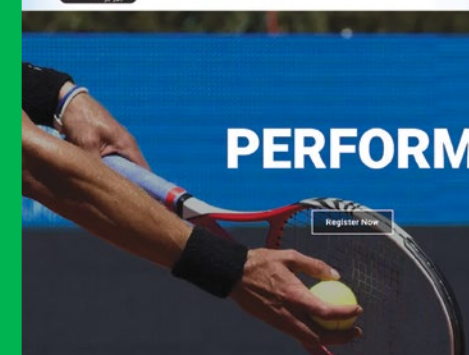
My wife and daughters were Girl Scout members too!

Websites • Logo Design



Email Design • Print Design

stevegreco design.com





Partner With Us!



Community Partner Patch Programs help Girl Scouts develop new skills through unique learning experiences created by local organizations in Suffolk County.

How can you help a Girl Scout change the world? Connect your company’s mission to the Girl Scout Leadership Experience. Girls can explore a wide range of topics, like STEM, first aid, and emergency preparedness. Patches are available to all Girl Scouts with requirements that vary by age level.

Today’s Girl Scouts are tomorrow’s leaders. By joining our team of Community Partners, you help Girl Scouts expand their understanding of the world around them and aid in their journey to make the world a better place.

See our available programs at www.gssc.us/patchprograms

If you are interested in developing a Community Partner Patch Program with us, please contact Julianne at jmerz@gssc.us



2023 CORPORATE PARTNERSHIPS

Girl Scouts of Suffolk County is looking for Strategic Partners!

We are confident that aligning with like-minded brands will only exponentially increase our reach and impact.

We offer our corporate partners multiple channels for building community goodwill by showcasing your support for **building girls of courage, confidence, and character who make the world a better place**. Our team will work with your company to create a tailored package that best supports your brand. Our aim is to form a strategic partnership that lets you choose where your brand is highlighted.

From skills-based opportunities to community events to workshop facilitation, volunteer projects offer great team-building engagements for your employees. A corporate partnership will allow your brand to make an impact through projects that fit the needs and abilities of any team.

- Customized employee engagement opportunities
- Photos and media content
- Stories of positive impact to share
- Support for projects customized to meet your specific needs and goals
- Unique opportunities to help girls and specific programs or communities

Corporate Partnership options span from one-time gifts, multi-year commitments, or even planned gifts.

We will collaborate on a wide range of **partnership inclusions** such as:

- Choice of sponsorship/gift allocation for greatest impact and mission alignment
- Corporate volunteer engagement opportunities
- Employee Giving Programs and Employer Donation Matches
- Event tickets and participation
- Listing in the annual report
- Naming opportunities & Plaques
- Official digital “patch” / partner insignia for your website
- Preferred Business Partner window decals (patch)
- Underwriting opportunities for events, programs, or initiatives



PARTNERSHIP TYPE	SUPPORT LEVEL
Daisy Dream Builder (Partner)	\$5,500 one-time annual
Bronze “Courage Builder” (Partner)	\$10,000 one-time annual
Silver “Confidence Builder” (Partner)	\$15,000 one-time annual
Gold “Character Builder” (Partner)	\$25,000 one-time annual
Trailblazers Impact Society (Partner)	\$50,000 one-time annual
Future Builder (Sustainer)	Multi-year commitment (any amount)
Juliette Gordon Low Society (Sustainer)	Planned Gift (any amount)



Customizable Support Allocation Options:

- Annual Golf Outing
- Annual Holiday Light Show
- “Bright Futures” Scholarship Support
- Camp Programming
- Corporate Camp for a Day teambuilding experience
- Corporate Cookies Partner Program and Cookie Booth Sales
- Corporate Retreat Use
- Corporate Trees Community Service Project
- Discovery World STEM + Arts Center (Note: Ask about gift matching through 9/30/23)
- Making an Impact Breakfast
- Partner Patch Program
- General Programming & Support



For questions, contact Nyrekia White, Director of Advancement & Strategic Partnerships, at nwhite@gssc.us or (631) 543-6622, Ext. 245.

Girl Scouts of Suffolk County is a 501c3 not-for-profit organization. Tax ID: 11-2164434.



Where Behavior Matters

We are a team driven by the belief that every child is entitled to a kind, respectful, fun, trust, and positive approach to learning.

BSI was founded by John Udaze – M.S.Ed, Post Graduate Certification in Applied Behavior Analysis, BCBA, and a New York State Licensed Behavior Analyst, with a purpose to help individuals make meaningful connections with the world around them and become valuable members of their community.

- **Professional Service**
- **Gold Standard Treatment**

Contact us

info@behavioralsolutionsinc.com
631-833-9296
380 Townline Road, Hauppauge, NY 11788

End your summer with a Bethpage FREE Checking Account!

Free Checking (For ages 21 years and over)

- *0.40% APY with required activities.*
- *Mastercard® Debit Card with access to over 30,000 surcharge-free ATMs nationwide.*

Student Checking (For ages 13-20)

- *Mastercard® Debit Card with access to over 30,000 surcharge-free ATMs nationwide.*
- *Parent/guardian joint owner is required for ages 17 and under.*

All of our Checking accounts have NO minimum balance requirement, and NO monthly service or maintenance fees.



For more information, visit lovebethpage.com.



Federally
Insured
By NCUA

Bethpage 
Federal Credit Union



CONNECTED TO YOUR MISSION

PROUDLY SUPPORTS



www.CeriniCPA.com

(631) 582-1600
3340 Veterans Memorial Hwy.
Bohemia, NY 11716

OUR SERVICES

- Accounting
- Auditing
- Budget Modeling
- Claims Audit Services
- Cost Reporting
- Financial Modeling
- Financial Planning
- Forensic Accounting
- Internal Audit Services
- Litigation Support
- Management Consulting
- Operational & Internal Control Reviews
- Policy & Procedure Reviews
- Strategic Business Planning

CONGRATULATIONS *Venise*



FROM
JOHN & DOLORES CORRADO

B R O N Z E

Decco

BY PARTY UP PRODUCTIONS



Specializing In:

Event Production and Design

Furniture Rentals • Lighting

deccobypartyup.com • partyupproductions.com

631.988.9579 • partyup@partyupproductions.us

Over 20 Years Experience



B R O N Z E

CONGRATULATIONS

TO

Dr. Venise Mule-Glass AND Christopher Coluccio

THE 2023

GIRL SCOUTS OF SUFFOLK COUNTY Honorees

Roger and Connie Smith

AND



BBS ARCHITECTS
LANDSCAPE ARCHITECTS
ENGINEERS

WWW.BBSARCHITECTURE.COM

B R O N Z E



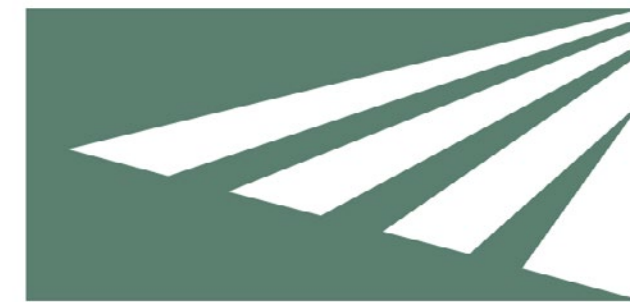
**Congratulations
Dr. Venise Mule-Glass**

— The Gentile Family

B R O N Z E

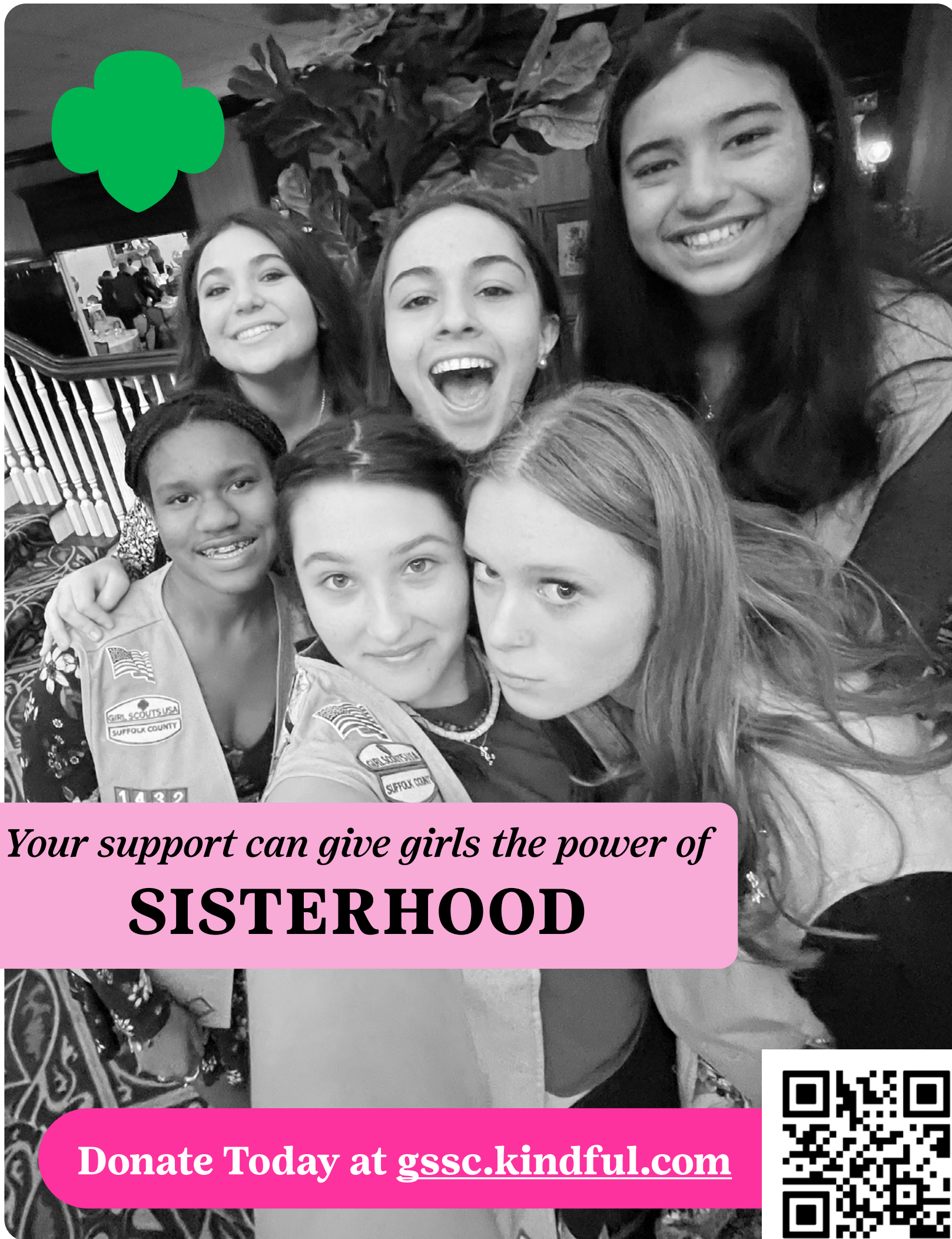
We Proudly Salute **The Girl Scouts of Suffolk County**

*On Their 2023 Golf Classic Honorees
Christopher Coluccio & Dr. Venise Mule-Glass*



**Nawrocki Smith LLP
CERTIFIED PUBLIC
ACCOUNTANTS
&
BUSINESS CONSULTANTS**

100 Motor Parkway
Suite 580
Hauppauge, NY 11788
Telephone: 631-756-9500
Facsimile: 631-756-9818
Website: www.nsllpcpa.com



Were you a Girl Scout? Connect to the Girl Scout Network

Do you have fond memories of your time in Girl Scouts? Now you can relive them by joining the Girl Scout Network.

This community is made up of both those who were Girl Scouts as children and those who want to support Girl Scouts now as they achieve today's dreams and imagine tomorrow's possibilities.

More than 50 million women participated in Girl Scouts as children—were you one of them? Daisy, Brownie, Junior, or higher, it all counts when it comes to calling yourself a proud Girl Scout alum!

When you sign up, you'll receive:

- Our monthly digital newsletter, featuring inspiring alum profiles, savvy career advice, volunteer and advocacy opportunities, and more.
- Invitations to memorable local and national events, including our exciting virtual Campfire Chat series.
- Discounts, such as 10% off your first purchase at girlscoutshop.com.

**Sign up at www.gssc.us/alum
or scan our QR code**



Questions? Contact customercare@gssc.us



"Truly, ours is a circle
of friendships, united
by our ideals."

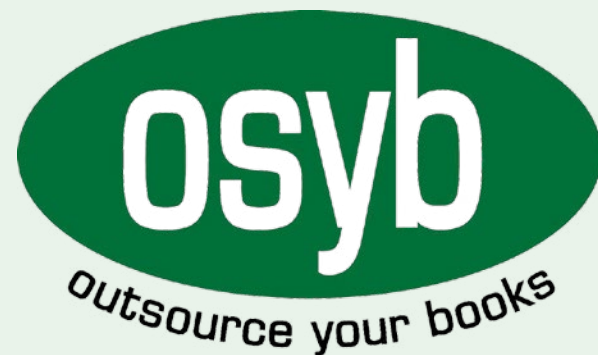
— Juliette Gordon Low



girl scouts 
of suffolk county



WISHING THE
GIRL SCOUTS OF
SUFFOLK COUNTY
GOOD LUCK ON A
SUCCESSFUL OUTING!



Call us for a FREE consultation
(516) 393-5620
www.osyb.com

Peter's
FRUIT COMPANY



CONGRATULATIONS TO
GIRL SCOUTS
OF SUFFOLK COUNTY
&
DR. VENISE MULE-GLASS

ROCKLINE®

WEALTH MANAGEMENT

Our team at Rockline Wealth Management would like to thank the Girl Scouts of Suffolk County for the impact they have on the community and are honored to support the great people and families involved in the organization.

255 Executive Drive STE: 409
Plainview, NY 11803
Phone: (516) 605-1624



Cleaning. Restoration. Construction.



24/7 Emergency Services
Residential and Commercial
Insurance Company Vendor



Fire



Water



Mold



Construction



Cleaning Services



Commercial



Storm Disaster



Biohazard



Sewage

SERVPRO of

North Huntington 631-423-1734

South Huntington 631-393-0404

Independently Owned and Operated





Dr. Venise Mule-Glass
PT, DPT, OCS, CSCS, RYT, Owner
Sunshine Physical Therapy



Sunshine Physical Therapy

297 Commack Road, Commack, NY 11725

**ENJOY THE THINGS
YOU LOVE TO DO**

631-499-1038



Christopher Coluccio
CEO & Co-Founder
Techworks Consulting, Inc.

Congratulations this years honorees!

SUNSHINE Physical Therapy is happy to announce the Newest Addition to our facility to further assist with your injury or rehabilitation.

Biodex isokinetic system is used to provide progressive exercise for an injured joint or muscle, as well as objective assessment of muscle and joint performance. The versatile, safe muscle-loading capabilities of System 4 accommodate the injured through all phases of rehabilitation: from early range-of-motion exercise to protective isometric strengthening to late-phase isokinetic strength exercise.



ACL • Hamstring • Concussion

- ✓ Orthopedic Clinical Specialist
- ✓ Sports Rehab Therapy
- ✓ Post Operative Therapy
- ✓ HHS Certified Orthopedic Hip Specialist



I've gone to other PT's for months and was not getting better. I came to Sunshine Physical Therapy and started having decreased pain within a few treatment sessions.

I continue to be impressed with everything here. The Staff is EXTRAORDINARY! Warm, Caring, Professional, Concerned ...

Practice is Top Notch #1



**Most Insurances
Accepted**
**NO PRESCRIPTION
REQUIRED**
(some insurances exempted)



**SCAN BETTER PT
for an appointment**

SP5226



girl scouts
of suffolk county

Dr. Venise Mule-Glass of Sunshine Physical Therapy proudly expresses her gratitude and appreciation to Girl Scouts of Suffolk County for recognizing her as one of this year's honorees at their 2023 Golf Classic.

Join **Dr. Venise Mule-Glass** in celebrating the 55th anniversary and support of over 12,000 Girl Scouts as they build **Courage, Confidence** and **Character** while making the world a better place.

Dr. Venise Mule-Glass would like to THANK All Family, Friends and Colleagues for Supporting The Girl Scouts of Suffolk County 2023 Golf Classic and for their Generous Donations.

To those that will be participating and or attending the Dinner, we are looking forward to a Wonderful & Charitable Day.



**Girl Scouts of Suffolk County's
2023 Golf Classic**

Tuesday, September 19, 2023

Nissequogue Golf Club
21 Golf Club Rd, St. James, NY
www.gssc.us/golf-classic



**SCAN CODE
FOR GOLF CLASSIC
REGISTRATION
INFORMATION**

Tomorrow's Innovators Are Today's Girl Scouts!

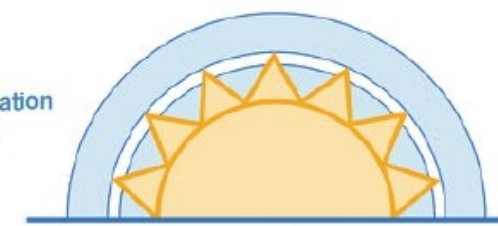


Dr. Venise Mule - Glass, DPT
Venise Mule-Glass,
PT, DPT, OCS, CSCS, RYT
HSS Credentialed Advanced Hip Clinician
Pilates Certified, Yoga Therapist, C-IAYT
Chairperson Council of Licensed
Physiotherapists of NYS.

- ✓ Orthopedic Clinical Specialist
- ✓ Sports Rehab Therapy
- ✓ Post Operative Therapy
- ✓ HHS Certified Orthopedic Hip Specialist



Most Insurances Accepted
NO PRESCRIPTION REQUIRED
(some insurances exempted)



Sunshine Physical Therapy

297 Commack Road
Commack, NY 11725
631.499.1038

255292



congratulates this year's honorees!



Christopher Coluccio
CEO & Co-Founder
Techworks Consulting, Inc.



Dr. Venise Mule-Glass
PT, DPT, OCS, CSCS, RYT, Owner
Sunshine Physical Therapy



PROUD TECHNOLOGY PROVIDER OF

girl scouts
of suffolk county

For over 20 years, Techworks Consulting, Inc. has been helping non-profits like the Girl Scouts of Suffolk County power their mission for dedicated IT Support.



TAKE THE NEXT STEP

Learn more about how Techworks can help your business please visit:

Call Us.
631.285.1527

Email Us.
info@maketechwork.com

Visit Us.
www.maketechwork.com



POWER YOUR MISSION

Where Non-Profits Turn for Dedicated IT Support

TECHWORKS PARTNERS WITH NON-PROFITS TO PROVIDE

Strategy & Support on:

- 24/7 IT Helpdesk Support
- Cloud Strategy & Migration
- Cybersecurity & Compliance
- Remote Connectivity
- Grant Consultation & Support
- Strategic Technology Planning
- Infrastructure Planning & Support
- Business Continuity & Backup Recovery
- IT Budgeting & Consulting
- Training & Education

LEARN MORE ABOUT TECHWORKS

Call Us.
631.285.1527

Email Us.
info@maketechwork.com

Visit Us.
www.maketechwork.com





CONGRATULATIONS TO THE GIRL SCOUTS OF SUFFOLK COUNTY FOR THEIR 2023 GOLF CLASSIC!



Over the past few years, lifetime members have helped provide more than 30,000 memberships to Girl Scouts across the country whose families would otherwise not have been able to afford it.



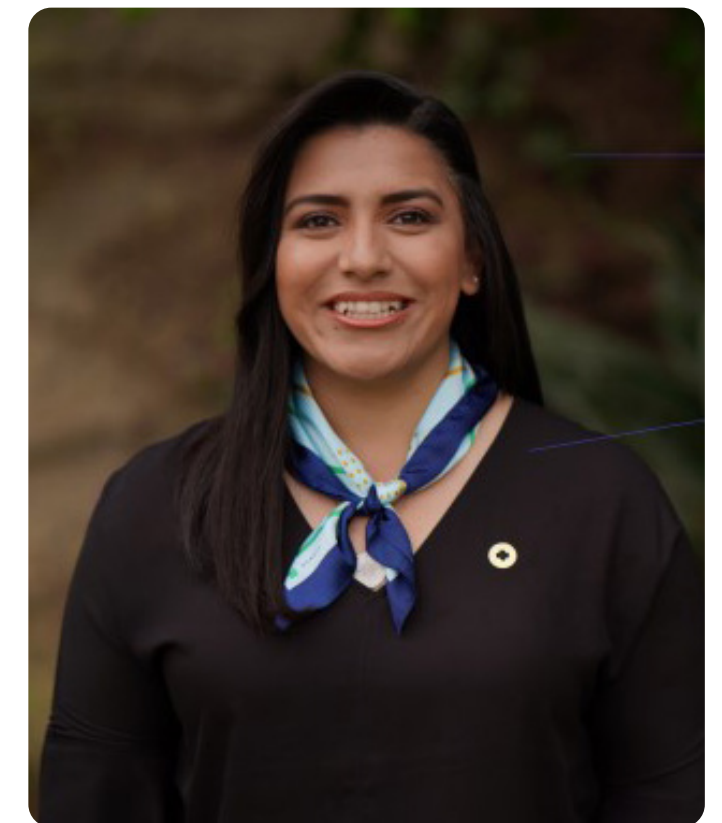
Support Girl Scouts for years to come by joining as a lifetime member. Your one-time membership fee ensures ALL Girl Scouts can unapologetically be themselves. Plus, you'll be signing up for a lifetime of watching them discover their strengths and rise to meet new challenges.

When you join as a lifetime member, \$25 of your membership fee will fund a year of Girl Scouting for a member in your local community.

Any individual who accepts the principles and beliefs of the Girl Scout Movement and is at least 18 years old can purchase a lifetime membership.

A Girl Scout lifetime membership is a one-time purchase and costs \$400. Alums under 30 or volunteers with ten or more years of service can purchase a lifetime membership for \$200. Your lifetime membership donation is tax-deductible as allowed by law.

Ready to join? Become a lifetime member at www.gssc.us/lifetime or scan our QR code



girl scouts 
of suffolk county

Questions? Contact customercare@gssc.us

Our 55th Anniversary Friends

Commack Basketball Association
Felberbaum, Halbridge & Wirth

Andrew Gregory
The Lefkowitz Family



Become A Girl Scout Corporate Cookie Connections Partner

Sponsor delicious Girl Scout Cookies and support Girl Scouts in their business goals!

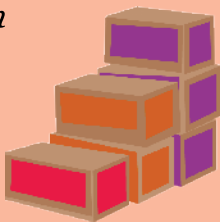
The Corporate Cookie Connections Program is designed to help Girl Scouts build their skills in communication, organization, and responsibility as they learn about cookie partnerships and closing a deal! Girl Scouts will learn to identify business prospects and create strategies for engagement. They'll create a proposal to guide their pitch to prospective clients. Plus, they'll receive tools that can be used once a sponsorship is secured to thank their clients and create long-lasting partnerships.

\$1,500 Platinum Corporate Sponsor: 300 boxes sponsored

- Commemorative Certificate
- Name in GSSC Annual Report
- Company logo on online Partner list
- Company logo in Holiday Light Show Program
- Company logo in a GSSC email to Girl Scouts of Suffolk County members and donors at the end of the Cookie season.

\$1,000 Gold Corporate Sponsor: 200 boxes sponsored

- Commemorative Certificate
- Listing in GSSC Annual Report
- Name on online Partner List
- Listing in GSSC's Holiday Light Show Program



\$500 Silver Corporate Sponsor: 100 boxes sponsored

- Commemorative Certificate
- Listing in GSSC Annual Report
- Name on online Partner List

\$250 Bronze Corporate Sponsor: 50 boxes sponsored

- Commemorative Certificate
- Listing in GSSC Annual Report

Learn more at www.gssc.us/corporate-cookies • Scan QR code »
Questions? Email Nyrekia at nwhite@gssc.us or call (631) 543-6622 x245



2023 Annual Strategic Partners

A Very Special Thank You To

TRAILBLAZERS IMPACT SOCIETY

The Knapp / Swezey Foundation Inc.

GOLD “Character Builder” PARTNER

Long Island Community Foundation

Nawrocki Smith LLP

Sunshine Physical Therapy

Techworks Consulting, Inc.

SILVER “Confidence Builder” PARTNER

Bethpage Federal Credit Union

BRONZE “Courage Builder” PARTNER

Donna Smeland

Geico Philanthropic Foundation

M&T Bank / M&T Charitable Foundation

Suffolk Credit Union

DAISY “Dream Builder” PARTNER

HKM Associates

Stony Brook Medicine / Stony Brook University

2023 Community Partners

Adelphi University – School of Social Work

Allied Foundation

Audi of Smithtown

Brighter Tomorrows

Borg Insurance Agency and Associates

Central Nassau Guidance & Counseling Services

Cornell Cooperative Extension - Suffolk

Dick's Sporting Goods / Golf Galaxy – Bayshore

Habitat For Humanity – Long Island

Home Depot

Island Federal Credit Union

Jake's 58 / Suffolk OTB

Jones Golf Academy

Jovia Financial Credit Union

Liberty Coca-Cola

Long Island Coalition Against Bullying

Long Island Nets

National Grid

Northwell Health

Outsource Your Books LLC

Philanthropy in Phocus

Ralph's Italian Ices – South Huntington

The Retreat

Sir Speedy - Westbury

PSEG

Undies for Change

Your support can give girls the power of

NEW EXPERIENCES

Donate Today at gssc.kindful.com





Board of Directors

Donna Smeland

Chair of the Board
Freelance Television Producer

Dawn Lott

1st Vice Chair
Commissioner, Suffolk County Human Rights
Commission and Dandeneau & Lott

Sarah McCandless

2nd Vice Chair
CFO, Suffolk Credit Union

Brandy Scott

Treasurer
Retired

Jennifer Friedman

Secretary
Executive Director, Sisters of St. Dominic Queen
of The Rosary Mother House

Tammy Severino

President & CEO
Girl Scouts Of Suffolk County



Lauren Agunzo

Partner, Nawrocki Smith, LLP

Christina DiBernardino

Mental Health Counselor & Owner,
Expressive Connections Mental Health
Counseling, PLLC

Hon. Valerie Cartright

Justice, New York Supreme Court,
Suffolk County

Debrah Garcia

Chief Executive Officer, Long Island Head Start

Steve Harper

President, Harper Marketing

Erika Karp

Community Relations Representative,
Stony Brook Medicine

Krupa Lauricella

Community Engagement Leader, Town Of Islip
/ CEO, FTZ Strategies, Inc.

Maria Marino

Business Development, Sir Speedy

Marjorie Mesidor

Partner, WIGDOR LLP

Antoinette O'Keefe

Senior Business Banker, Capital One

Karen Sweeney

Vice President of Member Experience,
Bethpage Federal Credit Union

John Udaze

President, Behavior Solutions, Inc.

Felicia Thomas-Williams

Principal, Brentwood Union Free School District

Girl Scouts of Suffolk County's **2023 Golf Classic**

Thank You For Your Support!

Join, Volunteer, Reconnect or Donate at www.gssc.us

442 Moreland Road, Commack NY, 11725 • (631) 543-6622

*Building Girls of Courage, Confidence, & Character
Who Make The World A Better Place*