

girl scouts 
of suffolk county

2024 Making an Impact Breakfast

*Voices of Women Trailblazers:
Building Courage, Confidence, and Character*

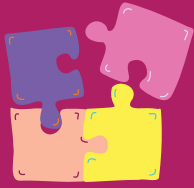
INTERNATIONAL WOMEN'S DAY

MARCH 8, 2024

STONEBRIDGE COUNTRY CLUB

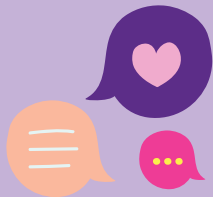


How Girl Scouts Can Support Mental Health*



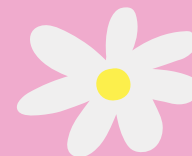
“Because of Girl Scouts, I’ve had a community and a safe place to be myself.”

2/3rds
of girls feel
like being in
Girl Scouts
supports their
mental health.



Girls say Girl Scouts
provides...

- ✓ A safe space
- ✓ A program that teaches leadership, courage, confidence, & character
- ✓ Social support & friendships
- ✓ Supportive adult relationships
- ✓ Consistency & comfort in a time of change



“Girl Scouts has taught me to be self-confident, which is very good for my mental health. I have learned to be brave when trying new things, which reduces anxiety I might have had when put in new or uncomfortable situations. I have learned to be adaptable. Girl Scouts’ encouragement of always trying new things has led me to pursue activities that make me happy.”

ABOUT GIRL SCOUTS OF SUFFOLK COUNTY

At Girl Scouts of Suffolk County, our mission is to build girls of courage, confidence, and character who make the world a better place.

The Girl Scout Leadership Experience is centered on four pillars-STEM, Outdoors, Life Skills, and Entrepreneurship, and is designed to build confidence in every girl, regardless of background or ability. Guided by supportive adults and peers, girls develop their leadership potential through age-appropriate activities that enable them to discover the world around them.

Today's Girl Scouts are tomorrow's world changers, and at Girl Scouts of Suffolk County, we are committed to helping every girl build a foundation for success.



CHANGE THE WORLD, INVEST IN GIRL SCOUTS

When Girl Scouts are in charge, you can be sure they will change the world for the better. Support Girl Scouts of Suffolk County and be a part of that change by investing in our council initiatives or joining us at an upcoming fundraising event.

Visit www.gssc.us/donate or scan our QR code



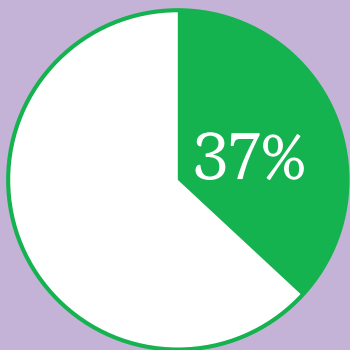


Girl Scout Alum Facts*

The Girl Scout alum community is over 50 million strong.

Based on current U.S. government population estimates, there are approximately 143 million adult women in the United States.

More than 1 in 3 women in the United States were Girl Scouts at some point in their lives.



79%
say they stand up for their beliefs and values

Compared to other women, Girl Scout alums embody higher levels of:

- **Courage**—they show resilience when learning from failure and setbacks, take on challenges, are ambitious, and aren't afraid to take risks (46% compared to 36%).
- **Confidence**—they accomplish what they set out to do and are assured in their abilities (66% compared to 53%).
- **Character**—they lead purposeful and meaningful lives, are honest and trustworthy, stand up for their beliefs and values, and actively contribute to others' well-being (74% compared to 62% showed positive values and 61% compared to 48% showed positive self-image).

Dear Friends,

Happy International Women's Day! Each year, with your support, our Making an Impact Breakfast brings together a dynamic panel of women to share stories of empowerment and strength as they inspire us all.

At Girl Scouts of Suffolk County, our mission to build girls of courage, confidence, and character who make the world a better place is a part of everything we do. We are committed to ensuring every Girl Scout has a safe space to lead, thrive, and be unapologetically themselves, regardless of background or ability.

The Girl Scout Leadership Experience centers on four pillars: STEM, Outdoors, Life Skills, and Entrepreneurship. It provides unique experiences that help level the playing field in our ever-changing world. Your engagement and generosity allow Girl Scouts to rise to new challenges by giving them the resources they need to realize their dreams.

Our 2024 Making an Impact Panelists, Dr. Uschi Chantal Auguste, Lucie Kwon, Liz Popwell, and Hon. Gail Prudenti, along with our moderator Toni Cimino, all share in our vision for the future of girls. Today's Girl Scouts are tomorrow's world-changers; with you in their corner, they can do anything.

Thank you for making an impact.

Warmly,



A handwritten signature in black ink that reads "Tammy Severino".

Tammy Severino
President & CEO



A handwritten signature in black ink that reads "Donna Smeland".

Donna Smeland
Chair of the Board

Were you a Girl Scout? Connect to the Girl Scout Network

Do you have fond memories of your time in Girl Scouts? Now you can relive them by joining the Girl Scout Network.

This community is made up of both those who were Girl Scouts as children and those who want to support Girl Scouts now as they achieve today's dreams and imagine tomorrow's possibilities.

More than 50 million women participated in Girl Scouts as children—were you one of them? Daisy, Brownie, Junior, or higher, it all counts when it comes to calling yourself a proud Girl Scout alum!

When you sign up, you'll receive:

- Our monthly digital newsletter, featuring inspiring alum profiles, savvy career advice, volunteer and advocacy opportunities, and more.
- Invitations to memorable local and national events, including our exciting virtual Campfire Chat series.
- Discounts, such as 10% off your first purchase at girlscoutshop.com.

**Sign up at www.gssc.us/alum
or scan our QR code**



Questions? Contact customercare@gssc.us



“Truly, ours is a circle of friendships, united by our ideals.”

— Juliette Gordon Low



girl scouts 
of suffolk county

OUR SPECIAL GUESTS



PANELIST

Dr. Uschi Chantal Auguste MD
Cardiologist, Catholic Health



PANELIST

Lucie Kwon
*Bureau Chief, Financial Crimes Bureau at
Suffolk County District Attorney's Office*



PANELIST

Liz Popwell, MPA, FACHE, PMP
*Chief Strategy and Transformation Officer,
Stony Brook Medicine*



PANELIST

Hon. Gail Prudenti
*Partner, Former NYS Chief Administrative
Judge, Burner Prudenti Law, P.C.*



MODERATOR

Tonia N. Cimino
Director, Corporate Events, Schneps Media

SAVE THE DATE!

girl scouts 
of suffolk county

2024 Golf Classic

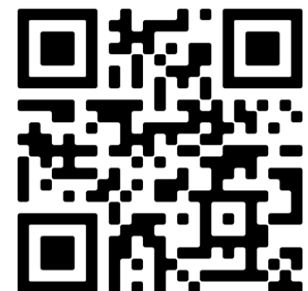
SEPTEMBER 24, 2024

**NISSEQUOGUE GOLF CLUB
ST. JAMES, NY**



HONORING

**Jeffrey W. Berkman, Esq., LL.M.,
Falcon Rappaport & Berkman LLP**



Become a Sponsor—www.gssc.us/golf

Contact Nyrekia White, Director of Advancement & Strategic Partnerships, for more info at nwhite@gssc.us or (631) 543-6622 x245

OUR BOARD OF DIRECTORS

Donna Smeland
Chair of the Board
Production Executive

Dawn Lott
1st Vice Chair
President, Women's Bar Association
of the State of New York / Commissioner,
Suffolk County Human Rights
Commission / Co-founder, Dandeneau &
Lott

Sarah McCandless
2nd Vice Chair
CFO, Suffolk Credit Union

Brandy Scott
Treasurer
Retired

Jennifer Friedman
Secretary
Sisters of St. Dominic of Amityville

Tammy Severino
President & CEO
Girl Scouts Of Suffolk County

Lauren Agunzo
Partner, Nawrocki Smith, LLP

Hon. Valerie Cartright
Justice, New York Supreme Court,
Suffolk County

Christina DiBernardino
Mental Health Counselor & Owner,
Expressive Connections Mental Health
Counseling, PLLC

Steve Harper
President, Harper Marketing

Erika Karp
Community Relations Representative,
Stony Brook Medicine

Krupa Lauricella

Maria Marino

Antoinette O'Keefe

Karen Sweeney

John Udaze
President, Behavior Solutions, Inc.

Felicia Thomas-Williams
Principal, Brentwood Union Free
School District

What do Girl Scouts think about the STEM program?*

Two-thirds of Girl Scouts (67%) are doing STEM programs—and the majority are doing multiple activities.

95%

of girls who did Girl Scout STEM activities thought they were fun



91%



tried activities they have never done before

88%

want to do more STEM activities



"I liked Backyard Science Night with the telescopes because seeing the moon through the telescope was cool." (Daisy)

"Observing the chemical reactions in candy making was very hands-on and left me with a good taste in my mouth." (Ambassador)

OUR BREAKFAST COMMITTEE

Krupa Lauricella

Breakfast Committee Co-Chair

2019 Making an Impact Breakfast Panelist and Current Board Member of GSSC

Jennifer Friedman

Breakfast Committee Co-Chair

*Sisters of St. Dominic of Amityville, Girl Scout Alumna,
Current Executive Board Member of GSSC, Past Delegate, Lifetime Member*

Adrienne Greene

Breakfast Committee Member

*Valley National Bank, Girl Scout Alumna, Current Troop Leader,
Service Unit Team, Past Delegate*

Tami Mitchell

Breakfast Committee Member

*Contour Mortgage, Girl Scout Alumna, Cookie Distribution Leader,
Service Unit Booth Chair, Girl Scout Troop Leader, Nut & Girl Scout Cookie Mom*

Donna Smeland

Breakfast Committee Member

*Production Executive, Girl Scout Alumna, Former Volunteer, Past Delegate,
Chair of the Board of GSSC, Lifetime Member*

Erika Karp

Breakfast Committee Member

*Stony Brook University & Stony Brook Hospital, Gold Award Girl Scout,
Current Board Member of GSSC*

Tammy Severino

Breakfast Committee
Member

*President & CEO of GSSC, Girl
Scout Alumna, Past Board Member,
Former Troop Leader & Girl Scout
Cookie Mom, Lifetime Member*

Nyrekia White

Breakfast Coordinator

*Director Advancement & Strategic
Partnerships of GSSC, Former Girl
Scout Cookie Mom, Current Girl
Scout Parent*

Julianne Merz

Breakfast Logistics

*Development Associate of GSSC,
Proud Girl Scouts Team Member*

2024

Planned Giving

girl scouts
of suffolk county



Create a Legacy with a *Planned Gift*

After converting the carriage house of her home into the first Girl Scout national headquarters, Juliette Gordon Low gifted the property to Girl Scouts in her will. Carry on her legacy and make Girl Scouts a beneficiary of your estate plans when you become a member of the **Juliette Gordon Low Society**.

As a Juliette Gordon Low Society member, you will be recognized as a member of the society, receive invitations to special events hosted by Girl Scouts, get updates about the work of Girl Scouts, and know that your gift will impact girls for generations to come.

Making a planned gift can include naming Girl Scouts as the beneficiary of any of the following: will, retirement plan, charitable gift annuity, living trust, donor-advised fund, life insurance policy, charitable remainder trust, charitable lead trust, remainder gift of real estate, or any other gift that benefits Girl Scouts in the future.



Scan the QR Code

Leave a Legacy Today!—www.gssc.us/legacy

Contact Nyrekia White, *Director of Advancement & Strategic Partnerships* at nwhite@gssc.us or call (631) 543-6622 x245

Join, volunteer, reconnect, or donate, by visiting www.gssc.us

Girl Scouts of Suffolk County is a 501c3 not-for-profit organization. Tax ID: 11-2164434

Invest in **Girls!**

girl scouts 
of suffolk county



*An investment in **Girl Scouts** is an investment in making our community better, stronger, and brighter.*

With the demand for Girl Scouts growing, we are striving to provide scholarships to girls from all backgrounds so they can enjoy the Girl Scout Experience, including participation in leadership development, STEM programming, and summer camp, despite their circumstances or inability to pay.

It is thanks to the generosity of our community, that we can provide financial assistance to girls who experience financial hardships, allowing them to reach their fullest potential. This is called the Girl Scout Difference, and we want this experience for all girls because all girls, despite background or ability, deserve educational and enriching opportunities that help them discover their strengths and passions.

Invest today at <https://gssc.kindful.com> and select "Invest in Girls" from our drop-down menu.



Scan the QR Code

Contact Nyrekia White, *Director of Advancement & Strategic Partnerships* at nwhite@gssc.us or call (631) 543-6622 x245

Join, volunteer, reconnect, or donate, by visiting www.gssc.us

Girl Scouts of Suffolk County is a 501c3 not-for-profit organization. Tax ID: 11-2164434

OUR BREAKFAST SUPPORTERS

Courage, Confidence, & Character Sponsor



Making an Impact Sponsor



Making an Impact Sponsor



Making an Impact Sponsor



Making an Impact Sponsor



OUR BREAKFAST SUPPORTERS

Making an Impact Sponsor



Making an Impact Sponsor



Making an Impact Sponsor



Making an Impact Sponsor



Making an Impact Sponsor





*Your Support Can Give Girls
the Power of **NEW EXPERIENCES***



\$1,000.00

*could provide a year of membership in
Girl Scouts, along with uniforms for an
ENTIRE TROOP in an economically hard
hit neighborhood in our communities.*

Donate Today at gssc.kindful.com
or Text "IMPACT" to (631) 212-9660



OUR BREAKFAST SUPPORTERS

Taking the Lead Sponsor



Taking the Lead Sponsor



Taking the Lead Sponsor



Table Partners

Maureen Barclay



SISTERS OF ST. DOMINIC
of AMITYVILLE NEW YORK

Donna Smeland

Favors & SWAG Sponsor

REAL DEZINES
Custom Apparel & Advertising Specialties





Your Support Can Give Girls the Power of CONFIDENCE



\$500.00

could provide 1 (one) girl in need a week of Summer Camp at Camp Edey along with her Girl Scout membership so she can explore the great outdoors and make new friends.

**Donate Today at gssc.kindful.com
or Text "IMPACT" to (631) 212-9660**



OUR SUPPORTERS & EXHIBITORS

Bethpage Federal Credit Union

Bulovas Restoration

Catholic Health

Contour Mortgage

JM2 Architecture PC

Marcum Search LLP

Nawrocki Smith LLP

New York Life

Rockline Wealth Management, LLC

South Shore University Hospital

Stony Brook Medicine

Suffolk Credit Union

Sunshine Physical Therapy

Techworks Consulting, Inc.

Valley Bank

Women's Diversity Network





Your Support Can Give Girls the Power of INSPIRATION



\$250.00

could provide 1 (one) new Girl Scout with a year of membership and her uniform so that she can expand her horizons.

**Donate Today at gssc.kindful.com
or Text "IMPACT" to (631) 212-9660**



OUR RAFFLE DONORS

ACE Hardware
Adventureland
Alex M. Wolff Photography
All Natural Soap Shop
Arooga's Grille House and Sports Bar
Bark Box
Benihana
Chico's
Contour Mortgage
DeWalt
Diva Nail & Spa
Dr. Venise Mule-Glass
Ed Becker
Fox Tail Farms Equestrian LLC
Gemini Salon
Insignia Prime Steak & Sushi
JBBQ Steak House
Jeff Weiner
Karisma Salon
Long Island Ducks
Lumecube

Maggie Hinchliffe Jewelry
Mary Kay
Michelle Devine/Metro Therapy, Inc.
Michele Dry Cleaners
New York Islanders
Nick LaMorte
Old Westbury Gardens
Pampered Chef
Prestige Performing Arts
Revel Restaurant & Bar
Secret Garden Café and Tea Shoppe
Smithtown Children's Foundation
Sugaring NYC
Swirls and Twirls
Tammy Severino
The Mandeville Method
TJE Dance Force
Topgolf - Holtsville
Uncle Giuseppe's
Valley Bank

**THANK YOU TO
OUR VENUE HOSTS**



Partner With Us!



Community Partner Patch Programs help Girl Scouts develop new skills through unique learning experiences created by local organizations in Suffolk County.

How can you help a Girl Scout change the world? Connect your company’s mission to the Girl Scout Leadership Experience. Girls can explore a wide range of topics, like STEM, first aid, and emergency preparedness. Patches are available to all Girl Scouts with requirements that vary by age level.

Today’s Girl Scouts are tomorrow’s leaders. By joining our team of Community Partners, you help Girl Scouts expand their understanding of the world around them and aid in their journey to make the world a better place.



See our available programs at www.gssc.us/patchprograms

If you are interested in developing a Community Partner Patch Program with us, please contact Julianne at jmerz@gssc.us

THANKS TO OUR PATCH PROGRAM PARTNERS





Girl Scout Community Programs

Last year, we brought the Girl Scout Experience to over 2,600 girls across diverse communities in over 30 schools and 4 family shelters.



We want the Girl Scout experience for all girls. Because all girls, despite background or ability, deserve educational and enriching opportunities that help them discover their strengths and passions.

*Compared to non-Girl Scouts, Girl Scouts are more likely to...

- **Develop a Strong Sense of Self:** *They have confidence in themselves and their abilities, and are happy with who they are as a person.*
- **Form Healthy Relationships:** *They develop and maintain healthy relationships by communicating their feelings directly and resolving conflicts constructively.*
- **Display Positive Values:** *They act ethically, honestly, and responsibly, and show concern for others.*
- **Be Community Problem-Solvers:** *They desire to contribute to the world in purposeful and meaningful ways, learn how to identify problems in the community, and create "action plans" to solve them.*
- **Seek Challenges:** *They take appropriate risks, try things even if they might fail, and learn from mistakes.*

*The Girl Scout Impact Study, GSRI, 2017

Making a Difference

With over 30 schools for this upcoming year and up to 90% of these Girl Scouts in need of scholarships, it's more important than ever to ensure we can give them access and help them become the next generation of leaders.

Join our team of strategic partners who enhance our Community Programs by adding other special workshops on financial literacy and budgeting, STEM activities, and special guest speakers.



For more information, contact customercare@gssc.us or call (631) 543-6622

GIRL SCOUT EXPLORATIONS COMMUNITY PROGRAM

Bringing the Girl Scout Experience to Every Girl!

Andrew T. Morrow Elementary School
Anthony Alfano Elementary School
Aquebogue Elementary School
Bay Shore Middle School
Charles E. Walters Elementary School K-1
Charles E. Walters Elementary School 2-4
Commack Middle School
Community Housing Innovations Medford
Community Housing Innovations
Moreland
Community Housing Innovations
Smithtown
Coram Elementary School K-1
Coram Elementary School 2-4
Cordello Avenue Elementary School
Edmund W. Miles Middle School
Family Service League Brentwood
Fifth Avenue Elementary
Francis O'Neill Elementary School
Frank J. Cannon Southeast Elementary
School
Gardiner Manor Elementary School
Greenport Elementary School
Hemlock Park Elementary School
LaFrancis Hardiman Elementary School
Laurel Park Elementary School
Loretta Park Elementary School
Marguerite Mulvey Elementary School
Martin L. King Jr. Elementary School
North Elementary School
Northeast Elementary School
Northwest Elementary School
Oak Park Elementary School
Park Avenue Memorial Elementary School
Pine Park Elementary School
Pronto of Long Island – Non-Profit
Community Outreach Center and Food
Pantry
Pulaski Street Elementary School
Ridge Elementary School K-1
Ridge Elementary School 2-4
Riley Avenue Elementary School
Roanoke Avenue Elementary School
Southwest Elementary School
West Middle Island Elementary School K-1
West Middle Island Elementary School 2-4

Become a Partner in Impact!



You Can Power **EVERY** Girl's Potential!

Girl Scouts builds girls of courage, confidence, and character with the support of community members and local businesses.

We offer a full suite of sponsorship opportunities that can be customized to provide a range of exposure for our partners throughout the year to make the greatest impact. Becoming a Corporate Partner connects you to a community of over 13,000 Girl Scouts and their families, alumni, lifetime adult members, and volunteer leaders. Some partnership inclusions are digital, physical, and event promotions, as well as employee engagement opportunities.

We will collaborate on a wide range of partnership inclusions such as:

- Choice of sponsorship/gift allocation for greatest impact and mission alignment
- Corporate volunteer engagement opportunities
- Employee Giving Programs & Employer Donation Matches
- Event tickets and participation
- Listing in the annual report
- Naming opportunities & Plaques
- Underwriting opportunities for events, programs, or initiatives

Customizable options, but not limited to:

- Annual Golf Outing
- "Bright Futures" Scholarship Support
- Camp Programming
- Camp-for-a-Day teambuilding experience
- Career-specific Programming & Activities
- Community School-based and Shelter-based programs
- Corporate Trees Community Service Project
- General Programming & Support
- Girl Scout Cookie Booths and Corporate Cookies Partner Program
- Major Holiday Events & Programs
- Making an Impact Breakfast
- Partner Patch Programs
- Retreat Use of our 95-acre Camp Edey location
- STEM + Arts Programming

Partnership	Support Level
Trailblazers Impact Society (Partner)	\$50,000 one-time annual
Gold "Character Builder" (Partner)	\$25,000 one-time annual
Silver "Confidence Builder" (Partner)	\$15,000 one-time annual
Bronze "Courage Builder" (Partner)	\$10,000 one-time annual
Daisy Dream Builder (Partner)	\$5,000 one-time annual
Future Builder (Sustainer)	Multi-year (any amount)
Juliette Gordon Low Society (Sustainer)	Planned Gift (any amount)



Partner with us TODAY!

gssc.us/partnership

◀ Scan the QR Code

Contact Nyrekia White, Director of Advancement & Strategic Partnerships at nwhite@gssc.us or call (631) 543-6622 x245

THANKS TO OUR ANNUAL STRATEGIC PARTNERS

TRAILBLAZERS IMPACT SOCIETY

The Knapp / Swezey Foundation Inc.

GOLD “Character Builder” PARTNER

Long Island Community Foundation

Nawrocki Smith LLP

Sunshine Physical Therapy

Techworks Consulting, Inc.

SILVER “Confidence Builder” PARTNER

Bethpage Federal Credit Union

BRONZE “Courage Builder” PARTNER

Donna Smeland

Geico Philanthropic Foundation

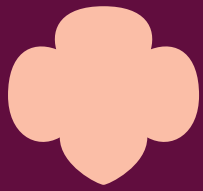
M&T Bank / M&T Charitable Foundation

Suffolk Credit Union

DAISY “Dream Builder” PARTNER

HKM Associates

Stony Brook Medicine / Stony Brook University



*Your Support Can Give
Girls the Power of INNOVATION*



\$100.00

*could provide 1 (one) new Girl Scout
with her uniform so that she can
enjoy feeling part of something
bigger than herself.*

**Donate Today at gssc.kindful.com
or Text "IMPACT" to (631) 212-9660**



THANKS TO OUR 2023-2024 COMMUNITY PARTNERS

Adelphi University – School of Social
Work

Allied Foundation

Association for Mental Health &
Wellness

Audi of Smithtown

Borg Insurance Agency and Associates

Brighter Tomorrows

Burner Prudenti Law PC

Catholic Health

Central Nassau Guidance & Counseling
Services

Cornell Cooperative Extension -
Suffolk

Dick's Sporting Goods / Golf Galaxy –
Bayshore

First Class Food Trucks

Habitat For Humanity – Long Island

Home Depot

IBEW Local 25

Island Federal Credit Union

Jake's 58 / Suffolk OTB

Jones Golf Academy

Jovia Financial Credit Union

Liberty Coca-Cola

Long Island Coalition Against Bullying

Long Island Council on Alcoholism and
Drug Dependency

Long Island Museum

Long Island Nets

National Grid

Northwell Health

NYPA

Office of Senator Mario R. Mattera

Outsource Your Books LLC

Philanthropy in Phocus

PSEG Long Island

Ralph's Italian Ices – South Huntington

Rockline Wealth Management

Schneps Media

Selfie Clubhouse

Sir Speedy – Westbury

Suffolk County District Attorney's
Office

The Retreat

Undies for Change

Xplore Kids



Corporate Camp-For-A-Day

Thursday, June 6, 2024 • Team Building with the Power of Girl Scouts

Gather your team of up to 10 individuals and join us for a day of fun-filled Girl Scout outdoor activities, mindfulness, and relaxation all while experiencing the joys of being adult campers!

- **Date:** Thursday, June 6, 2024
(*Rain date: June 13, 2024*)
- **Time:** 10:00 AM - 3:00 PM
- **Location:** Camp Edey, Bayport
- **Register by May 24, 2024**

We'll be engaging in group recreational activities such as hiking, fishing, archery, and bonding exercises. You'll also have the opportunity to network with other corporate teams and partners during lunch, all while supporting a wonderful cause. Come join us for an unforgettable day!

Your \$2,500 investment in our Girl Scout programming and scholarships will support girls in need to attend our Summer Camp.

 **Habitat for Humanity**[®]
of Long Island, NY

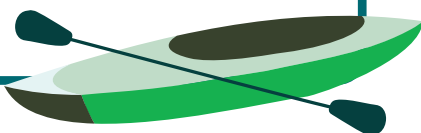
In line with community service, we are joining forces with **Habitat for Humanity Long Island** to assist families who are moving into newly constructed homes. We ask all attendees to please bring a household item that can be donated for this cause.

Need more info? Contact Nyrekia White, Director of Advancement & Strategic Partnerships at nwhite@gssc.us or call (631) 543-6622, ext. 245

Sign Up For Adventure @
www.gssc.us/camp4aday



Looking to host a private corporate camp retreat?
Book your next event at <https://bit.ly/gssc-retreat>



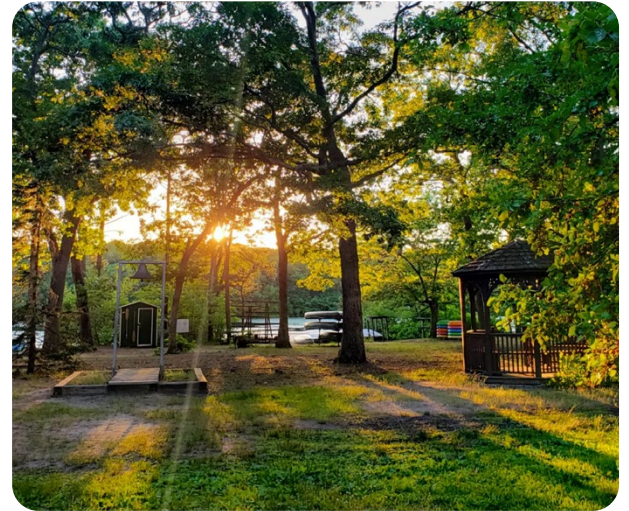
Book Your Next Event or Retreat with Girl Scouts of Suffolk County!

Your Next Adventure Awaits You & Your Team at Camp Edey! This picturesque location is the perfect backdrop for your next event or staff retreat. Situated on a sprawling 95-acre property, Camp Edey boasts beautiful views of the Sans Souci Lakes in Bayport.

Whether you're a Girl Scout or a non-Girl Scout group, we've got you covered! Camp Edey offers a variety of indoor and outdoor activities that are sure to get you into the team spirit. From boating and fishing to archery and more, there's something for everyone.

Don't miss out on the fun! Book your next event at Camp Edey and create memories that will last a lifetime! Fill out our Request Space Inquiry Form at <http://bit.ly/space-inquiry-form>

Please note, our camp is unavailable during our summer camp season, June 1 through mid-August.



Questions? Contact Nyrekia White, Director of Advancement & Strategic Partnership, at nwhite@gssc.us or (631) 543-6622 x245

girl scouts 
of suffolk county

Over the past few years, lifetime members have helped provide more than 30,000 memberships to Girl Scouts across the country whose families would otherwise not have been able to afford it.



Support Girl Scouts for years to come by joining as a lifetime member. Your one-time membership fee ensures ALL Girl Scouts can unapologetically be themselves. Plus, you'll be signing up for a lifetime of watching them discover their strengths and rise to meet new challenges.

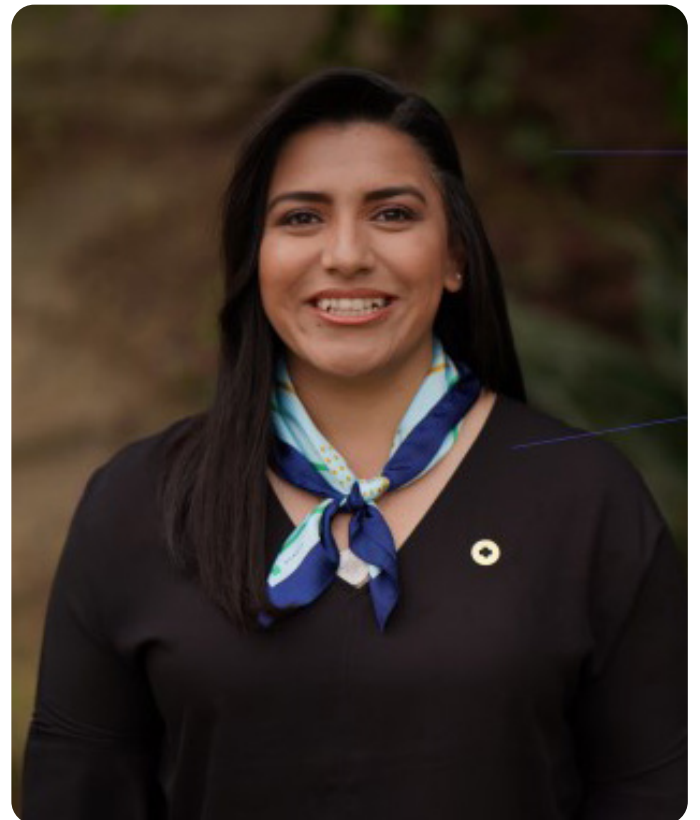
When you join as a lifetime member, \$25 of your membership fee will fund a year of Girl Scouting for a member in your local community.

Any individual who accepts the principles and beliefs of the Girl Scout Movement and is at least 18 years old can purchase a lifetime membership.

A Girl Scout lifetime membership is a one-time purchase and costs \$400. Alums under 30 or volunteers with ten or more years of service can purchase a lifetime membership for \$200. Your lifetime membership donation is tax-deductible as allowed by law.

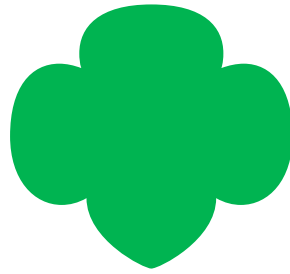
Ready to join? Become a lifetime member at www.gssc.us/lifetime

or scan our QR code



girl scouts 
of suffolk county

Questions? Contact customer care@gssc.us



You've Made An Impact For Girl Scouts of Suffolk County!

**Because of you, girls can find the
courage, confidence and character to
change the world.**

*Thank you to our special guests, Dr. Uschi
Chantal Auguste, Tonia N. Cimino, Lucie Kwon,
Liz Popwell, and Hon. Gail Prudenti, and thank
you to all our supporters for being a part of our
amazing event.*



Donna Smeland
*Chair of the Board,
Girl Scouts of Suffolk County*

Join, Volunteer, Reconnect or Donate at www.gssc.us



Become A Girl Scout Corporate Cookie Connections Partner

Sponsor delicious Girl Scout Cookies and support Girl Scouts in their business goals!

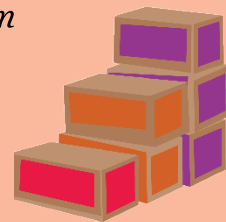
The Corporate Cookie Connections Program is designed to help Girl Scouts build their skills in communication, organization, and responsibility as they learn about cookie partnerships and closing a deal! Girl Scouts will learn to identify business prospects and create strategies for engagement. They'll create a proposal to guide their pitch to prospective clients. Plus, they'll receive tools that can be used once a sponsorship is secured to thank their clients and create long-lasting partnerships.

\$1,500 Platinum Corporate Sponsor: 300 boxes sponsored

- *Commemorative Certificate*
- *Name in GSSC Annual Report*
- *Company logo on online Partner list*
- *Company logo in Holiday Light Show Program*
- *Company logo in a GSSC email to Girl Scouts of Suffolk County members and donors at the end of the Cookie season.*

\$1,000 Gold Corporate Sponsor: 200 boxes sponsored

- *Commemorative Certificate*
- *Listing in GSSC Annual Report*
- *Name on online Partner List*
- *Listing in GSSC's Holiday Light Show Program*



\$500 Silver Corporate Sponsor: 100 boxes sponsored

- *Commemorative Certificate*
- *Listing in GSSC Annual Report*
- *Name on online Partner List*

\$250 Bronze Corporate Sponsor: 50 boxes sponsored

- *Commemorative Certificate*
- *Listing in GSSC Annual Report*

Learn more at www.gssc.us/corporate-cookies • Scan QR code »
Questions? Email Nyrekia at nwhite@gssc.us or call (631) 543-6622 x245



2024

Honor Bricks

girl scouts
of suffolk county



Building Girls of Courage, Confidence & Character One Brick at a Time

Just as Girl Scouts change the world one day at a time, this campaign builds a solid foundation of support and growth for young women one brick at a time. Honor a Girl Scout, Troop Leader, Volunteer, etc.

Funds raised through this campaign are dedicated to programs and services for girls of all backgrounds throughout Suffolk County. Choose to place your brick at either at Camp Edey in Bayport or our Main Office in Commack (*Limited availability*).

Prices:

- \$125.00: “Green as Girl Scouts” Honor Brick
- \$100.00: Red Honor Brick

A limited number of concrete memorial benches are also available.



Scan the QR Code

Buy a Brick Today!—www.gssc.us/giveback

Contact Nyrekia White, *Director of Advancement & Strategic Partnerships* at nwhite@gssc.us or call (631) 543-6622 x245

Join, volunteer, reconnect, or donate, by visiting www.gssc.us

Girl Scouts of Suffolk County is a 501c3 not-for-profit organization. Tax ID: 11-2164434



ELDER LAW • ESTATE PLANNING
TRUST & ESTATES • REAL ESTATE



Groundbreaking Leadership. Enduring Compassion.

Burner Prudenti Law is a women-owned business run by prominent leaders in Long Island's legal community. Partners Nancy Burner, Britt Burner, and Hon. Gail Prudenti know the importance of breaking down barriers as women in business and work hard to pioneer progress.

The team at Burner Prudenti Law never stops working toward a better tomorrow.

LONG ISLAND
631-941-3434

MANHATTAN
212-867-3520

BURNERLAW.COM



EAST SETAUKET | WESTHAMPTON BEACH | MANHATTAN | EAST HAMPTON



Sunshine Physical Therapy

297 Commack Road
Commack, NY 11725

**ENJOY THE THINGS
YOU LOVE TO DO**

Call to Schedule an Appointment

631-499-1038

What Differentiates **SUNSHINE PHYSICAL THERAPY** from other Physical Therapy Offices? We asked our patients and they said... "Experience, HHS Hospital of Special Surgery Credentials, Longevity of Providing Professional Service and Care to our Community."

With every Visit at **SUNSHINE PHYSICAL THERAPY** a Hands on approach is provided with specialized treatment to the specific needs of our patients. While many practices have a PT evaluate their patients initially and then most subsequent visits are often with inexperienced staff.

Just in 2021 thus far **SUNSHINE PHYSICAL THERAPY** has rehabilitated over 200 patients that had received HIP, KNEE, SHOULDER Replacement and ROTATOR CUFF Injuries.

- ✓ Orthopedic Clinical Specialist
- ✓ Sports Rehab Therapy
- ✓ Post Operative Therapy

✓ **HSS** Rehabilitation Network
HHS Certified Orthopedic Hip Specialist

Sunshine PT is a Proud Supporter of

girl scouts of suffolk county



Dr. Venise Mule – Glass, DPT
Venise Mule-Glass,
PT, DPT, OCS, CSCS, RYT
HSS Credentialed Advanced Hip Clinician
Pilates Certified, Yoga Therapist, C-IAYT
Chairperson Council of Licensed
Physiotherapists of NYS.

Most Insurances Accepted

NO PRESCRIPTIONS REQUIRED

(some insurances exempted)



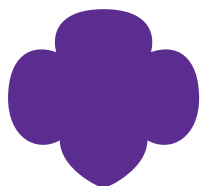
I've gone to other PT's for months and was not getting better. I came to Sunshine Physical Therapy and started having decreased pain within a few treatment sessions.

I continue to be impressed with everything here. The Staff is EXTRAORDINARY! Warm, Caring, Professional, Concerned ...

Practice is Top Notch #1



SCAN BETTER PT for an appointment



MONTHLY GIVING CLUB



Help us build girls of courage, confidence, and character while introducing them to a life-long sisterhood, and the power of new experiences!

How to enroll in the Monthly Giving Club:

- Go to gssc.kindful.com
- Select “Invest in Girls”
- Enter in your donation amount
- Choose “Recurring” and your preferred date

or Text “IMPACT” to (631) 212-9660

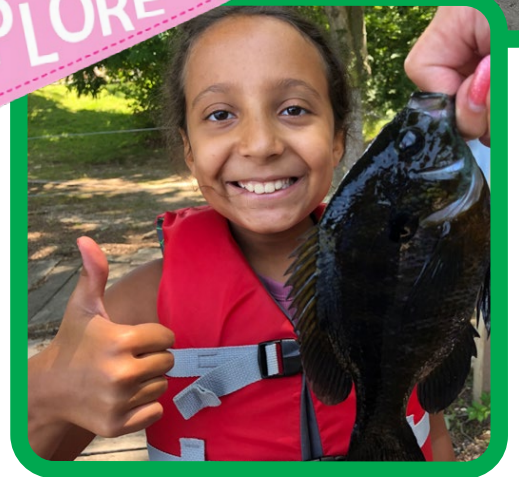


SUMMER CAMP

*The Ultimate Unplugged
Experience at Camp Edey!*



EXPLORE



Rising 1st-9th Grade Girls

*Fun, Friendship, and
Outdoor Activities*

9 Weekly Sessions:

July 1 - August 30, 2024

Camp Hours:

9:00 am - 4:30 pm

Camp Edey

1500 Lakeview Ave.
Bayport, NY 11705

DAY CAMP

1st-6th Grade

Swimming, hiking, sports, etc.

\$425 per camper
(Week 1: \$340)

TEEN-VENTURES CAMP

7th-9th Grade

A field trip every week.

\$575 per camper
(Week 1: \$460)

SLEEPAWAY CAMP

5th-9th Grade

Everything included in day/teen camp.

Available July 7 - August 23, 2024

- 5th-6th Graders: \$630 per camper
- 7th-9th Graders: \$700 per camper

OPTIONAL ADDITIONAL SERVICES

Extended Care: \$75 per camper, per week (Week 1: \$60)

Bus Transportation: \$140 per camper, per week (Week 1: \$112)



Learn More at www.gssc.us/summercamp

Questions? customercare@gssc.us • (631) 543-6622

B R O N Z E

Bethpage is proud to support the

Girl Scouts Of Suffolk County

and their 2024 Making an Impact Breakfast.

*“Building Courage, Confidence, &
Character!”*



For more information, visit lovebethpage.com.

Bethpage 
Federal Credit Union

 Federally
Insured
By NCUA



Proudly Sponsors

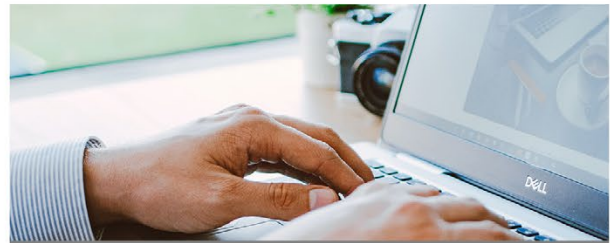
THE GIRL SCOUTS OF SUFFOLK COUNTY

CALL AND MENTION GIRL SCOUTS FOR 3 FREE MONTHLY PAYMENTS

sales@emeralddocument.com



BUY/LEASE PRINTERS & COPIERS



PAPERLESS SOFTWARE



INTERACTIVE WHITE BOARDS



AWARD WINNING SERVICE TEAM

emeralddocument.com | (631) 319-1620



BRONZE

Family Owned Since 1950



FREE Quote
800-425-5526



Voted Long Islands #1 Mover 2017,
2019, 2020, 2021, 2022 & 2023

LET'S CELEBRATE
OUR
**WOMEN TRAILBLAZERS
WHO BUILD COURAGE,
CONFIDENCE, &
CHARACTER**

girl scouts 
of suffolk county

Senator Mario R. Mattera



MATTERA.NYSENATE.GOV

BRONZE



Proud Supporter of Girl Scouts of Suffolk County!

Early detection is the best protection



Get your
annual mammo
at **PURE**
Mammography

- Walk-ins Welcome
- Spa-like setting
- No copays
- No prescription or referral needed

Roosevelt Field Mall
516-863-2471

Smith Haven Mall
631-652-3424

puremammo.com

MAKE AN IMPACT

WITH PROMOTIONAL PRODUCTS
MOTIVATE • EDUCATE • PROMOTE



DID YOU KNOW?...
The world record for solving
the Rubik's cube is
3.47 seconds!

**HEALTH
AND
WELLNESS**



MAILABLE PRODUCTS

**TECH
ACCESSORIES**



STRESS RELIEVERS



EVENT GIVEAWAYS

**CUSTOMIZE
WITH YOUR
LOGO!**



EMPLOYEE GIFTS

**WE BELIEVE IN
MAKING
AN IMPACT!
PROUD SUPPORTER
OF THE GSSC**

Real DeZines
Custom Apparel & Advertising Specialties

631-957-4313 • Sales@RealDezines.com • www.RealDezines.com



SCAN ME!



2024 Making an Impact Breakfast

Because of your collective impact, we can continue to provide financial support to girls from all backgrounds across Suffolk County, ensuring that every girl who wishes to be a Girl Scout can become one.

Thank you for fueling our mission to build girls of courage, confidence, and character, who make the world a better place. We hope that you will participate in our upcoming events and engagement opportunities!

— The Committee



Join, Volunteer, Reconnect or Donate at www.gssc.us

442 Moreland Road, Commack NY, 11725 • (631) 543-6622

